



UNITED! MOVEMENT

Youth Engagement in Global Fund Processes Roadmap

**A Guide for CCM Youth
Representatives & Young People –
Engaging in Global Fund
Processes**

GC8 Grant Cycle: Key Stages for Young People Engagement

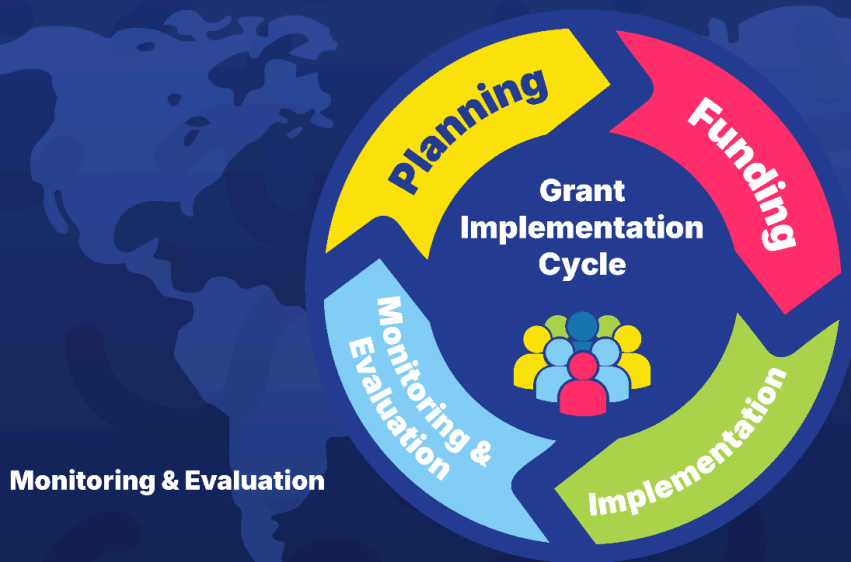


Young people working on HIV, TB, and malaria know that **Global Fund grants shape the services that reach people's lives**. From treatment and prevention programs to community systems strengthening and health system investments. Yet for many young people and youth-led organizations, the process that turns **approved funding into real programs on the ground** can feel distant, technical and difficult to influence.

Understanding this cycle is essential for ensuring that **young people's priorities are not only heard but implemented**.

Why the Grant Implementation Cycle Matters?

The Global Fund's grant implementation cycle determines how resources are allocated, how programs are delivered, and how progress is monitored.



For **young people** and **youth-led networks**
Understanding this cycle helps **Answer Critical Questions**



When can young people influence program priorities?



How can young people ensure their needs are reflected in budgets and activities?



What mechanisms exist to track whether commitments are actually delivered?

Key Stages

1. Country Dialogue and Funding Request Development

Every Global Fund grant begins with a country dialogue process, where governments, civil society, communities and technical partners discuss priorities for the next grant cycle.

The Community Priority Annex, captures the priorities identified by communities and civil society through consultations. This annex documents the highest priority interventions identified by constituencies **(up to 20 items)** ensuring their needs are clearly recorded and considered during funding request development.

This stage is critical because it determines:

- What programs will be funded
- Which populations are prioritized
- How resources are allocated across HIV, TB, malaria and health systems

If young people are not meaningfully engaged at this stage, key priorities may never enter the grant.

Funding Priorities from Civil Society and Communities Annex



Funding Priorities of Communities and Civil Society Most Affected by HIV, Tuberculosis and Malaria

Date Published: 24 November 2025

This funding request annex aims to capture a list of highest priority recommended interventions from the perspective of communities and civil society most affected by the three diseases, even if these are not prioritized in the final funding request submitted to the Global Fund. This information will be used by the Global Fund to assess the effectiveness of country dialogue and to give a fuller picture of community needs.

For portfolios that are required to submit this annex: Community and civil society representatives on the Country Coordinating Mechanism (CCM) should coordinate the completion of this form with the support of the CCM Secretariat and submit it through the CCM as part of the formal funding request submission. Only one consolidated annex with a maximum of 20 interventions may be submitted.

Country	
Component(s)?	
Community/Civil Society CCM Representative(s)	

Description of recommended intervention, expected impact or outcome, and estimated cost (if available)?	Optional: Additional comments (including proposed implementation modality)?

List only as needed

List of communities and constituencies consulted and represented in the development of this list, with the details of each of the individuals

Organization, Constituency and Email	
--------------------------------------	--

- Identify and aggregate community priorities during community consultations to capture highest priority interventions that deliver value for money and maximize grant impact.
- Required for applicants from **High Impact and Core** countries.
- Up to a maximum 20 items
- Includes list of civil society organizations and constituencies consulted

Look out for the TRP feedback and engage meaningfully in this process of addressing the comments made. Ensure to be part of the funding request development teams to ensure youth priorities are part of the grant application.

2. Grant-Making: Turning Priorities into Programs

Once the Global Fund approves a funding request, the process moves into grant-making.

This stage translates proposals into detailed implementation plans, including:

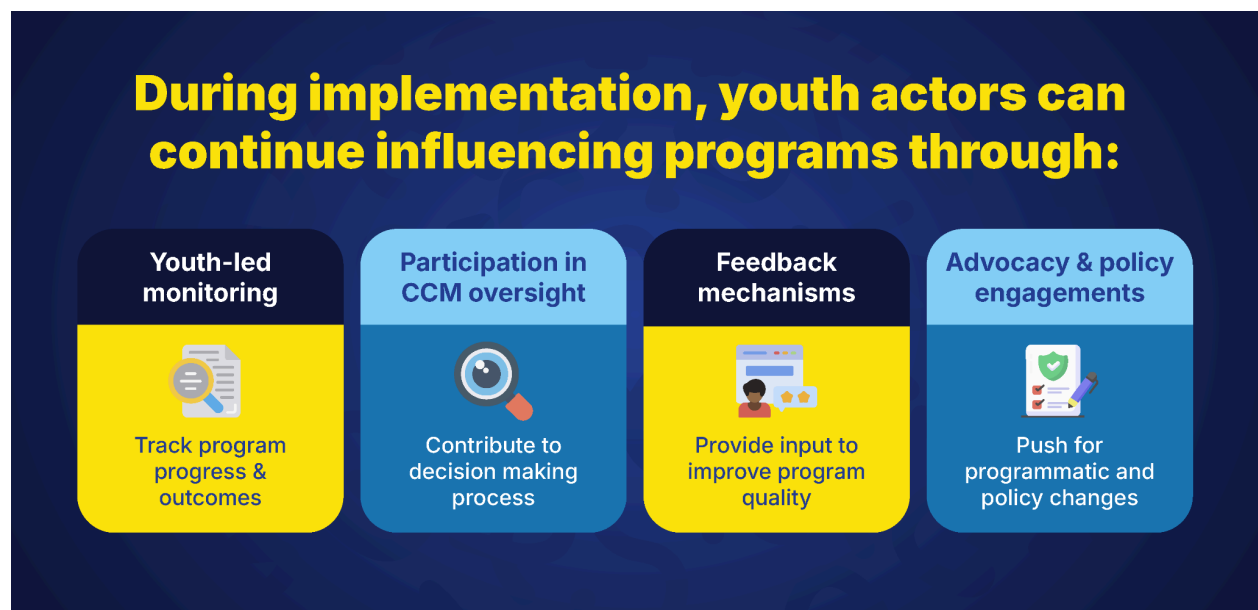
- Program activities
- Budgets and cost allocations
- Targets and performance indicators
- Implementation arrangements

For youth representatives on Country Coordinating Mechanisms (CCMs), access to timely information during grant negotiations is critical to ensure youth priorities remain protected and visible.

3. Grant Implementation: Delivering Services

Once grants are signed, the implementation phase begins. This is where plans translate into **real services**, including:

- HIV treatment and prevention programs
- TB detection and treatment
- Malaria prevention and control interventions
- Community systems strengthening initiatives
- Procurement of medicines, commodities



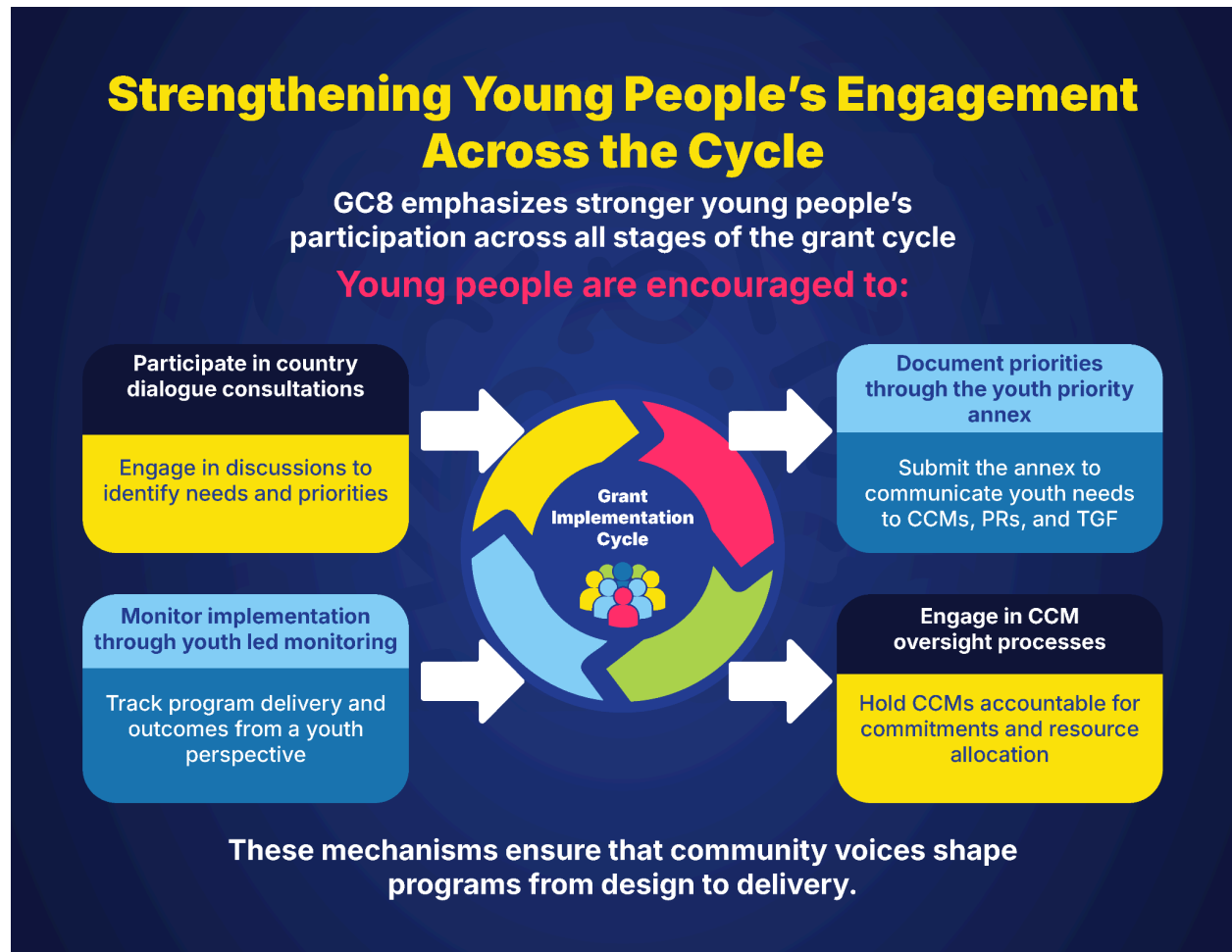
4. Monitoring, Learning and Adaptation

Global Fund grants are continuously monitored to track; program performance, financial accountability and impact of interventions.

Countries regularly submit progress updates and disbursement requests, allowing the Global Fund to assess whether programs are meeting agreed targets. This

stage also allows stakeholders to identify gaps and adjust programs when needed, ensuring resources are used effectively.

Community-led monitoring has become increasingly important in this phase, helping provide real-time feedback from service users and communities.



5. Preparing for the Next Cycle

Toward the end of implementation, countries begin preparing for the **next funding request cycle**. Lessons learned during implementation should inform:

- Future priorities
- Sustainability planning
- Integration with broader health systems

- Strengthening community systems

The cycle then begins **AGAIN** ideally with stronger community engagement and more responsive programming.